

CO-WRAP Browser Combability Instructions

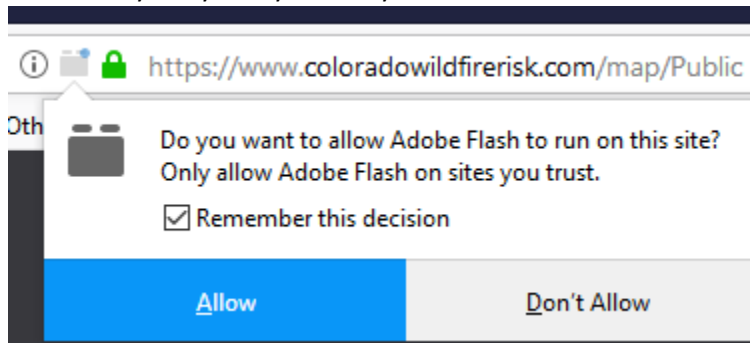
This document provides instructions on how to install and allow Flash to work with different browsers. Based on recent browser changes with different browsers CSFS recommends that Firefox or Edge be used as your primary browser for running CO-WRAP applications.

Firefox

1. Click button to Get Adobe Flash player
2. Run downloaded flash exe file (select option to update automatically)
3. Restart Firefox
4. Open CO-WRAP viewer
5. Firefox may ask you to confirm you want to run flash – yes



6. Firefox may ask you if you always want to run flash for CO-WRAP (yes)



Microsoft Edge

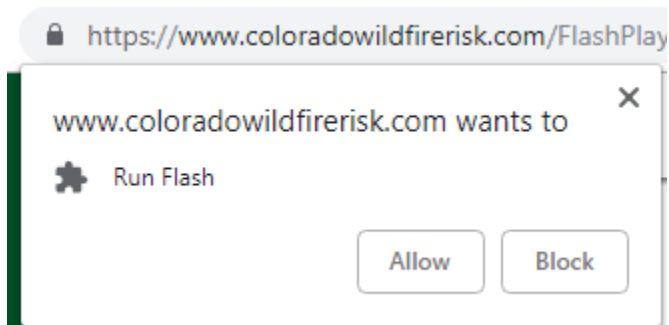
1. Click button to Get Adobe Flash player
2. Browser may ask if you want to allow once or always allow



3. Choose an option
4. Go back to CO-WRAP home
5. Open CO-WRAP viewer

Chrome

1. Click button to Get Adobe Flash player
2. Chrome may ask if you want to allow the browser to run flash (Allow)



3. Go back to CO-WRAP home
4. Open CO-WRAP viewer
5. Note: you may need to do this every time you visit CO-WRAP in Chrome. Accordingly Chrome is not recommended as your primary browser for using the CO-WRAP applications.

Internet Explorer

Note: I.E. is not recommended due to issues with Flash and other standard web mapping components. Unpredictable results may occur with certain mapping functionality if you proceed with using I.E.

1. Click button to Get Adobe Flash player
2. Run downloaded flash exe file (select option to update automatically)
3. Restart Internet Explorer
4. Open CO-WRAP viewer