



Colorado Forest Atlas

User Manual

Updated: May 25, 2022

ColoradoForestAtlas.org

Welcome to the Colorado Forest Atlas User Manual.

Whether you're a novice or advanced user, this documentation should cover almost everything you need to know about using the Colorado Forest Atlas Portal.

Getting started with the Colorado Forest Atlas is easy and it won't take long to learn the basics, but if you need any help or just want to find out more about a particular feature, then this manual is for you.

If you have further questions or need additional support, please contact us directly using the contact page on the Colorado Forest Atlas portal website.

Table of Contents

<i>About the Colorado Forest Atlas</i>	4
Accessing the CFA	4
Signing In	4
Registration.....	5
Getting Support	5
Documentation	6
Quick Help and Info.....	6
Contacting Support	6
Providing Feedback	6
<i>Using the Forest Atlas Portal</i>	7
Home	7
Support	7
Contact	8
About the Applications	8
Wildfire Risk Viewer (Previously CO-WRAP Public Viewer)	8
Wildfire Risk Reduction Planner (Previously CO-WRAP Professional Viewer)	8
Forest Action Plan 2020.....	9
Application Portal.....	9
My Profile	10

About the Colorado Forest Atlas

Accessing the CFA



Colorado Forest Atlas Portal homepage.

The Colorado Forest Atlas is located at www.coloradoforestatlas.org and is accessible using standard web browsers such as Mozilla Firefox, Google Chrome, Microsoft Edge or Apple Safari. Microsoft Internet Explorer is known to have functional issues with the applications and is not recommended.

Signing In



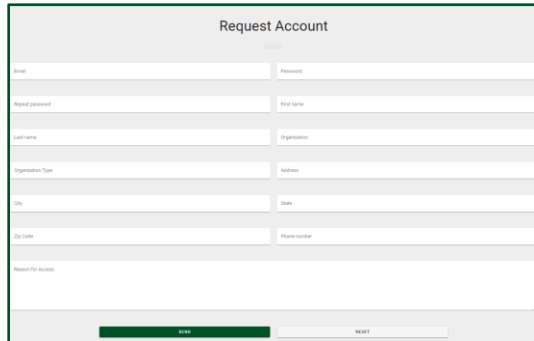
Colorado Forest Atlas Sign In page.

Use of the Wildfire Risk Reduction Planner requires prior registration and approval. If you have not signed in on the Colorado Forest Atlas Portal, you will be required to sign in prior to accessing the Wildfire Risk Reduction Planner.

To Sign In, click on the Sign In button in the navigation bar of the Colorado Forest Atlas. You will be directed to the Sign In screen.

To request an account, follow the directions outlined in the Registration section of this document.

Registration



Colorado Forest Atlas account request form.

Registration is required for use of the Wildfire Risk Reduction Planner. To register/request an account, click the Request Account button in the center of the homepage. Complete the required fields and click Send to send your request for registration.

Your registration request will be forwarded to the CSFS Forest Atlas Administrator for review. Please provide a **Reason for Access** (i.e. why do you want access to the Wildfire Risk Reduction Planner?). The CSFS Forest Atlas Administrator will review your request and respond accordingly. Registrations are usually approved the same day. You will receive a notification through email when your account has been approved.

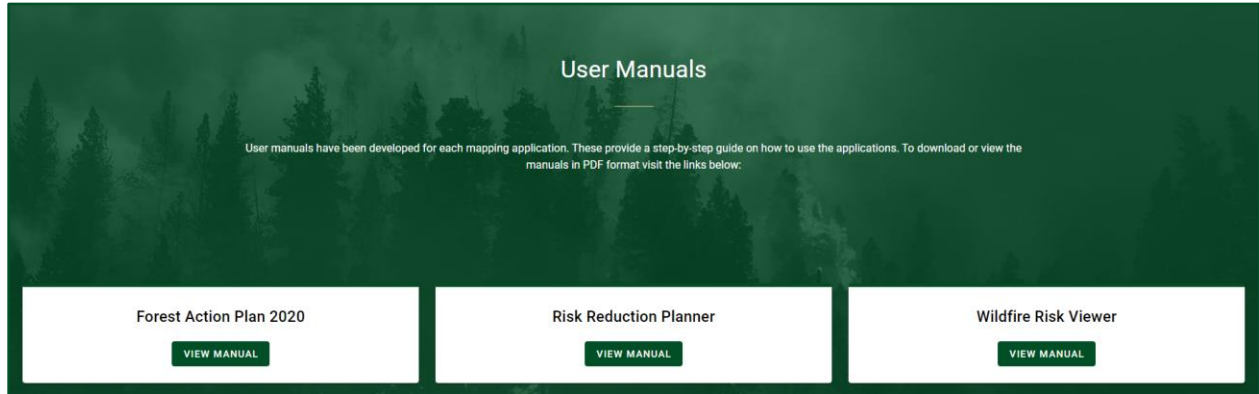
Note: You only need to register and create an account if you want to access the Wildfire Risk Reduction Planner. To use the Wildfire Risk Viewer or other public applications, you do not need to register.

If you previously registered for the Colorado Wildfire Risk Assessment Portal (CO-WRAP), you do not need to register for the Forest Atlas. Sign in with your CO-WRAP credentials.

Getting Support

Support for the Colorado Forest Atlas and the available applications can be found on the Colorado Forest Atlas Portal Support page. Click Support in the navigation bar to access the Support page.



Documentation



User Manual section on Support page.

User documentation is provided for each application in PDF format. The user manuals can be found in the User Manuals section of the Support page. Click the *View Manual* link for the application’s user manual that you would like to download.

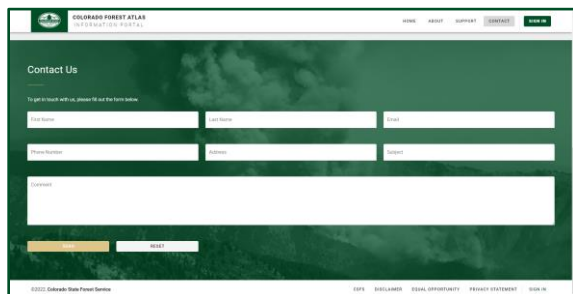
Quick Help and Info

Throughout the applications you will find  and  icons. Click on these for quick information about application tools, map layers or other important features of the applications.

Contacting Support

Support is available via the Colorado Forest Atlas contact form at <https://coloradoforestatlas.org/contact>. Send any questions or inquiries you have, and we will provide a response as quickly as possible. Please include your contact information in case we need to contact you to discuss options and solutions.

Providing Feedback



Colorado Forest Atlas Feedback Page.

The Colorado State Forest Service invites you to provide feedback on the Colorado Forest Atlas Portal and any of its applications. Please provide your comments and suggestions for improvement using the [Contact](#) page on the site.

Using the Forest Atlas Portal

Home

The home page is accessible from every page in the Colorado Forest Atlas Portal. Click *Home* in the navigation bar to navigate back to the homepage at any point.

The home page also contains direct access to the Colorado Forest Atlas public applications.

- Wildfire Risk Viewer
- Wildfire Risk Reduction Planner (Requires Login)
- Forest Action Plan 2020

Support

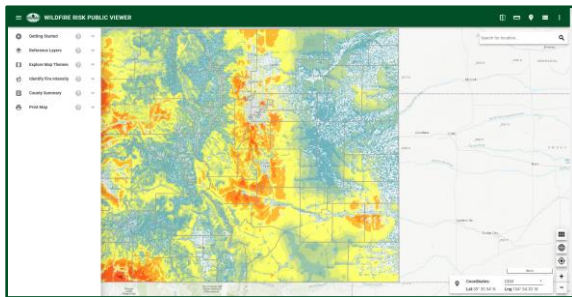
The Support page is accessible through the Colorado Forest Atlas navigation bar. The support page contains documentation and user manuals for each application and information about training.

Contact

The Contact page is accessible through the Colorado Forest Atlas navigation bar. The contact page contains a contact form where users can provide feedback or comments and contact support for the Colorado Forest Atlas and its applications.

About the Applications

Wildfire Risk Viewer (Previously CO-WRAP Public Viewer)

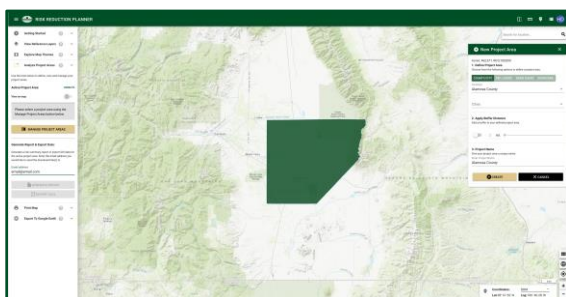


Wildfire Risk Viewer Application.

The Wildfire Risk Viewer is a web mapping application designed to let users zoom to a place of interest, explore map themes, and identify wildfire risk for a specific location on the map. The featured tool in this application is called “Identify Your Fire Intensity.” It allows users to identify potential wildfire intensity near their home, or any other point of interest on the map, and provides a link to additional resources for users wanting to know how to reduce their risk.

The application is accessible to any supported web browser and does not require registration or a login.

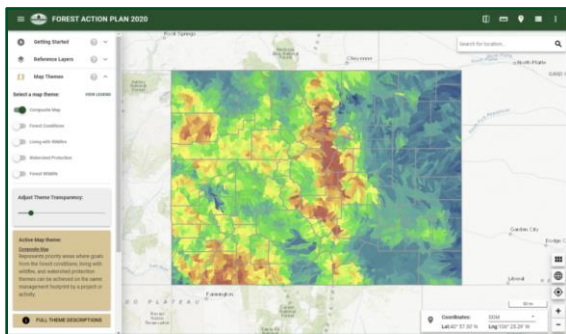
Wildfire Risk Reduction Planner (Previously CO-WRAP Professional Viewer)



Wildfire Risk Reduction Planner Application.

The Wildfire Risk Reduction Planner is a web mapping application designed to support the community wildfire protection planning needs of government officials, hazard mitigation planners, and wildland fire professionals. This application contains advanced functionality and additional map themes as compared to the Wildfire Risk Viewer. The key features of this application include the capability to define a project area, generate a detailed risk summary report, and export and download wildfire risk GIS data. Access to the Wildfire Risk Reduction Planner requires a valid user account from the Colorado State Forest Service.

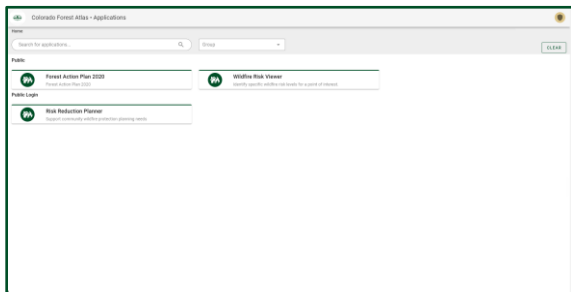
Forest Action Plan 2020



Forest Action Plan 2020 Application.

The Forest Action Plan 2020 application can be used to view and print maps from the 2020 Colorado Forest Action Plan. A key feature of this application is the ability to generate a county-level report that describes the Forest Action Plan theme maps and goals, and how they fit with the National Priorities of the State Forest Action Plans: CONSERVE working forestland, PROTECT forests from harm, and ENHANCE public benefits from trees and forests. Visit <https://csfs.colostate.edu/forest-action-plan/> for more information about Colorado’s Forest Action Plan.

Application Portal

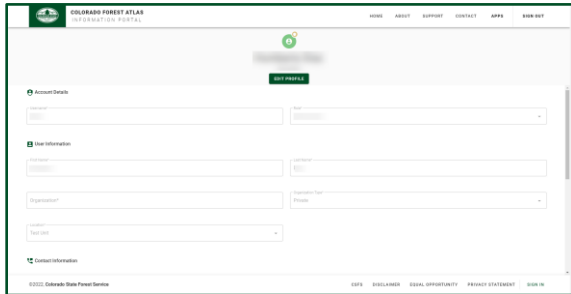


Colorado State Forest Service

Colorado Forest Atlas Public Application Portal.

When you login with your Colorado Forest Atlas account you will be directed to the new Applications Portal page. This page contains a list of all the public applications you have access to, as well as your profile.

My Profile



Colorado Forest Atlas profile page.

If you have registered for an account with the Colorado Forest Atlas, you will have access to a My Profile page. This profile page is where you can manage your user information and reset your password if needed.